



Putting digital technology at the service of  
small-scale fisheries and coastal communities

*A contribution to a more sustainable ocean.*

Andre Dias - 2023



“As long as there are fish in the sea, we will never go hungry.”

My Father



**1º**  
**MARINE**  
**SPATIAL**  
**PLANNING**

**2º**  
**ONLINE**  
**FISH-MARKET**  
**APPS**

# MARINE SPATIAL PLANNING

Inseguro | testacunhas.com/conteudos.aspx?id=10



Choose language:

HOME COMPANY FISHERIES AQUACULTURE CUSTOMER NEWS GALLERY CONTACTS

2012

ON  
PORTUGUESE  
SEAS  
SINCE 1927

## Aquacultura Offshore



### Location

The allotment, "Algarve Offshore Seashells", is located 1 nautical mile off the coast of the Algarve, between the Lagos and Sagres Harbors, at Ponta da Piedade, under the jurisdiction of the Lagos Port Captain Office. The allotment is dimensioned so as to allow the installation of 10 structures, each one with a serviceable area of 16 hectares (400 m x 400 m).

### Coordenadas Geográficas WGS84

Vértice A: 37°04,200'N e 8°42,800'W

Vértice B: 37°04,200'N e 8°41,000'W

Vértice C: 37°03,400'N e 8°41,000'W

Vértice D: 37°03,400'N e 8°42,800'W

[back](#)

# MARINE SPATIAL PLANNING

2015

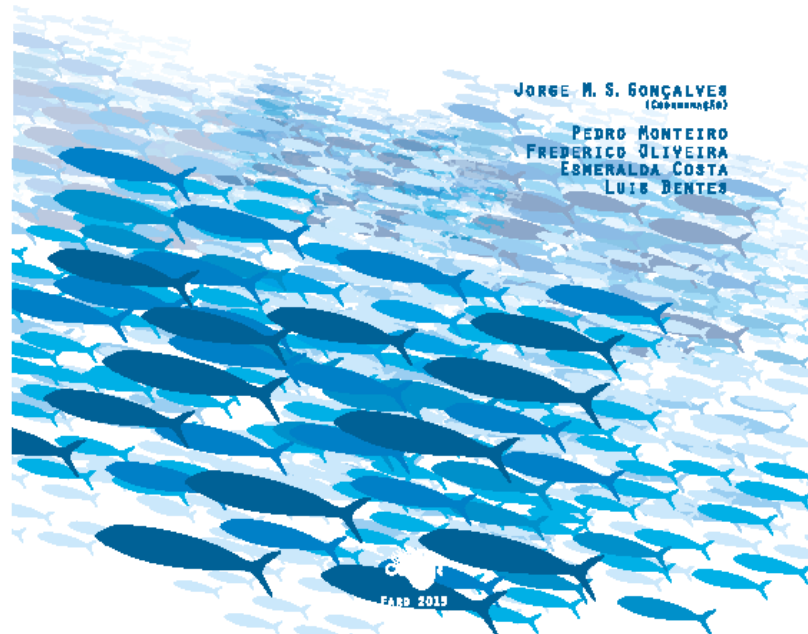


**PESCAMAP**  
MAPEAMENTO DE BANCOS DE PESCA ALGARVIOS

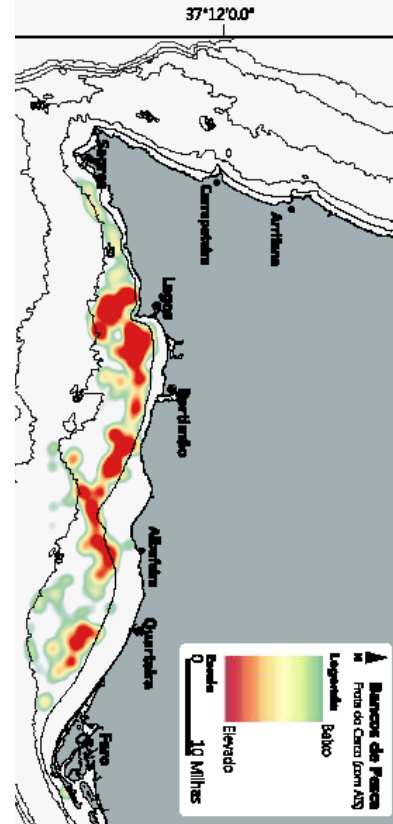
BANCOS DE PESCA DO CERCO E DA PEQUENA  
PESCA COSTEIRA DO BARLAVENTO ALGARVIO

JORGE M. S. GONÇALVES  
(Coordenação)

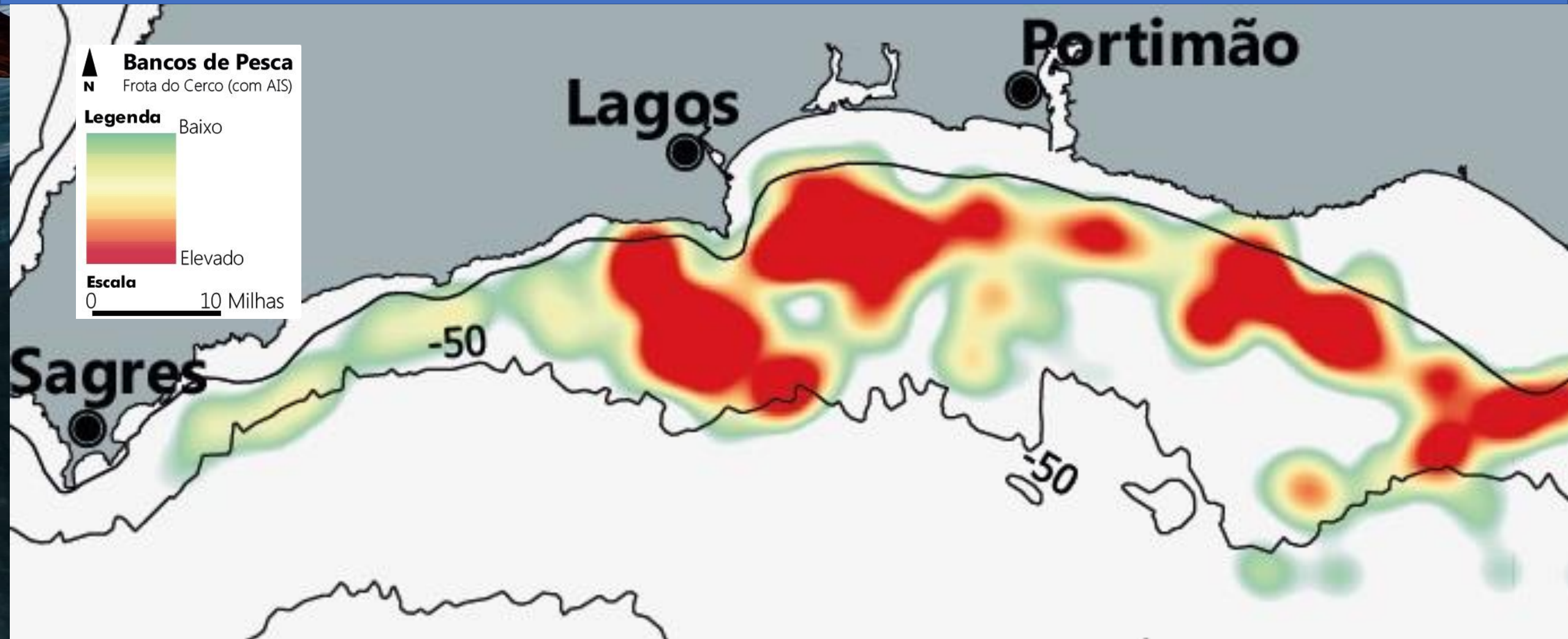
PEDRO MONTEIRO  
FREDERICO OLIVEIRA  
ESMERALDA COSTA  
LUIS BENTES



FARD 2015

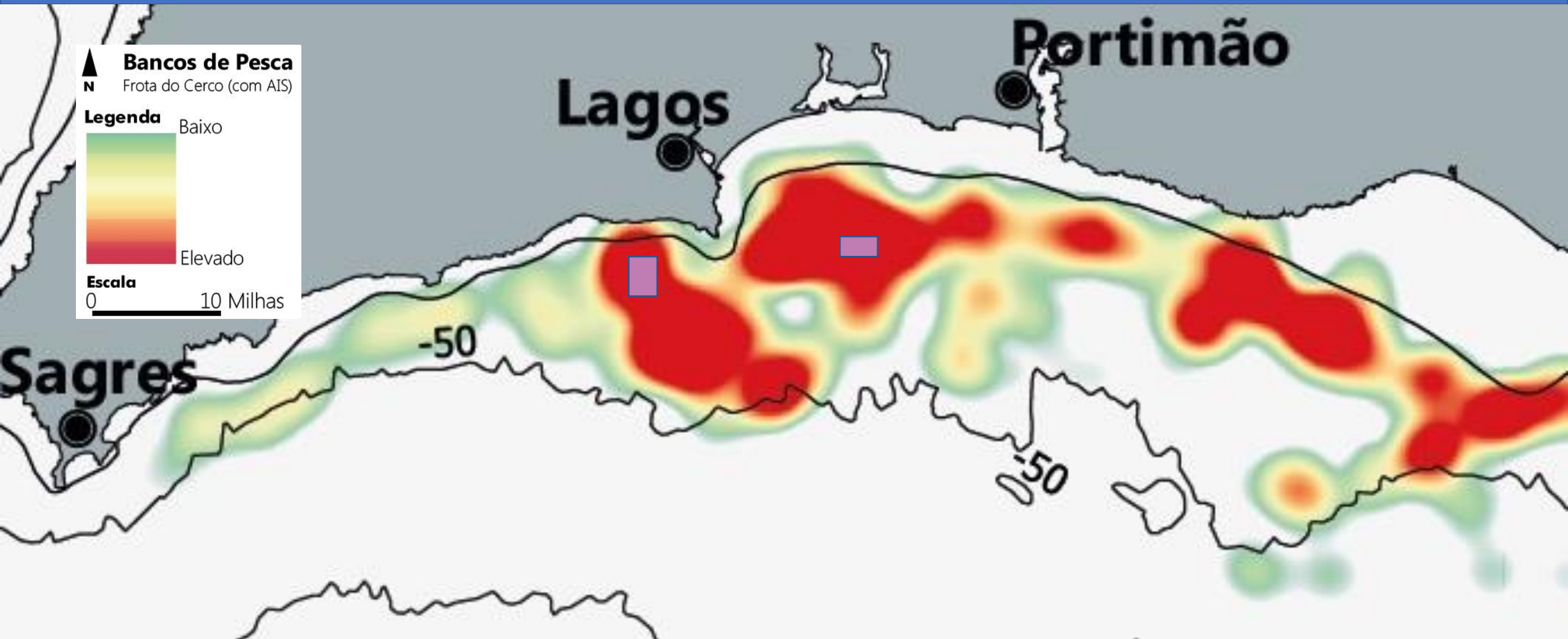


# MARINE SPATIAL PLANNING



Map of the fishing grounds of the set of seiners in the Western Algarve with Automatic Identification System (AIS). The caption refers to fishing activity.

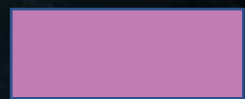
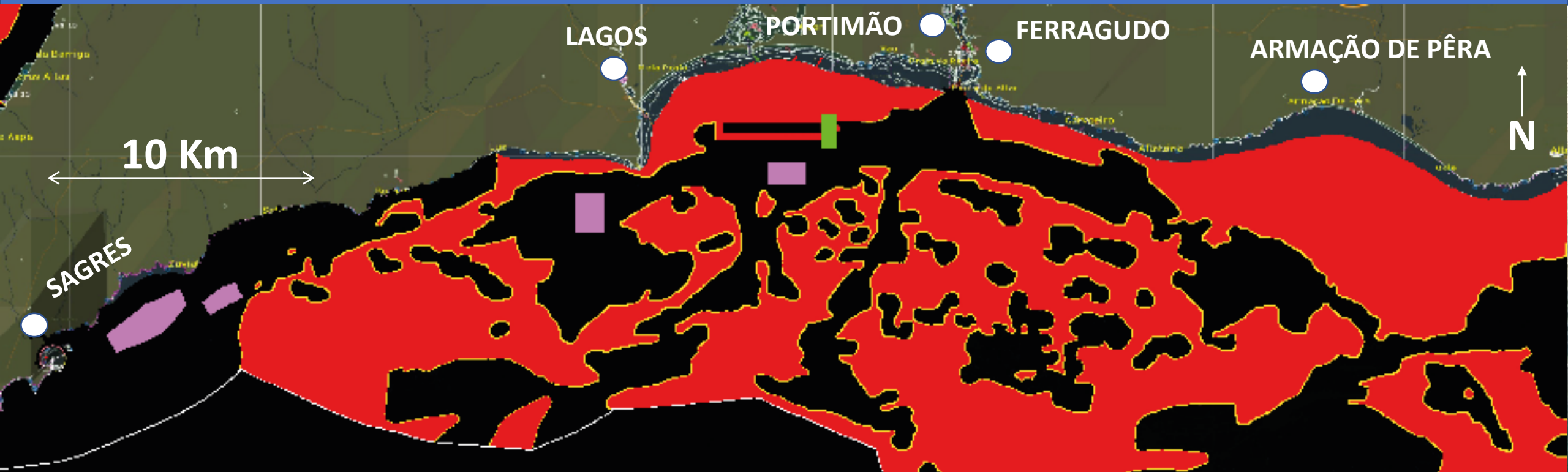
# MARINE SPATIAL PLANNING



Map of the fishing grounds of the set of seiners in the Western Algarve with Automatic Identification System (AIS). The caption refers to fishing activity.

 Offshore Aquaculture

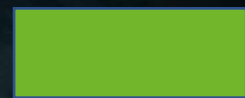
# MARINE SPATIAL PLANNING



**Offshore Aquaculture**



**Artificial Reefs**



**Underwater Navy Museum**



**Rocky bottom**

Map of the fishing grounds from the seiner "ARRIFANA" the Western Algarve. The caption refers to obstacles that make fishing activity unfeasible.



# MARINE SPATIAL PLANNING

NEW ACTIVITIES ARE PUSHING THEIR WAY INTO THE MARINE SPACE

**IMPORTANT**

PRESERVE VIABLE FISHERIES IN SUSTAINABLE FISHING GROUNDS

# MARINE SPATIAL PLANNING

**Live Monitoring  
of fishing activity**



**Protect fishing  
grounds**

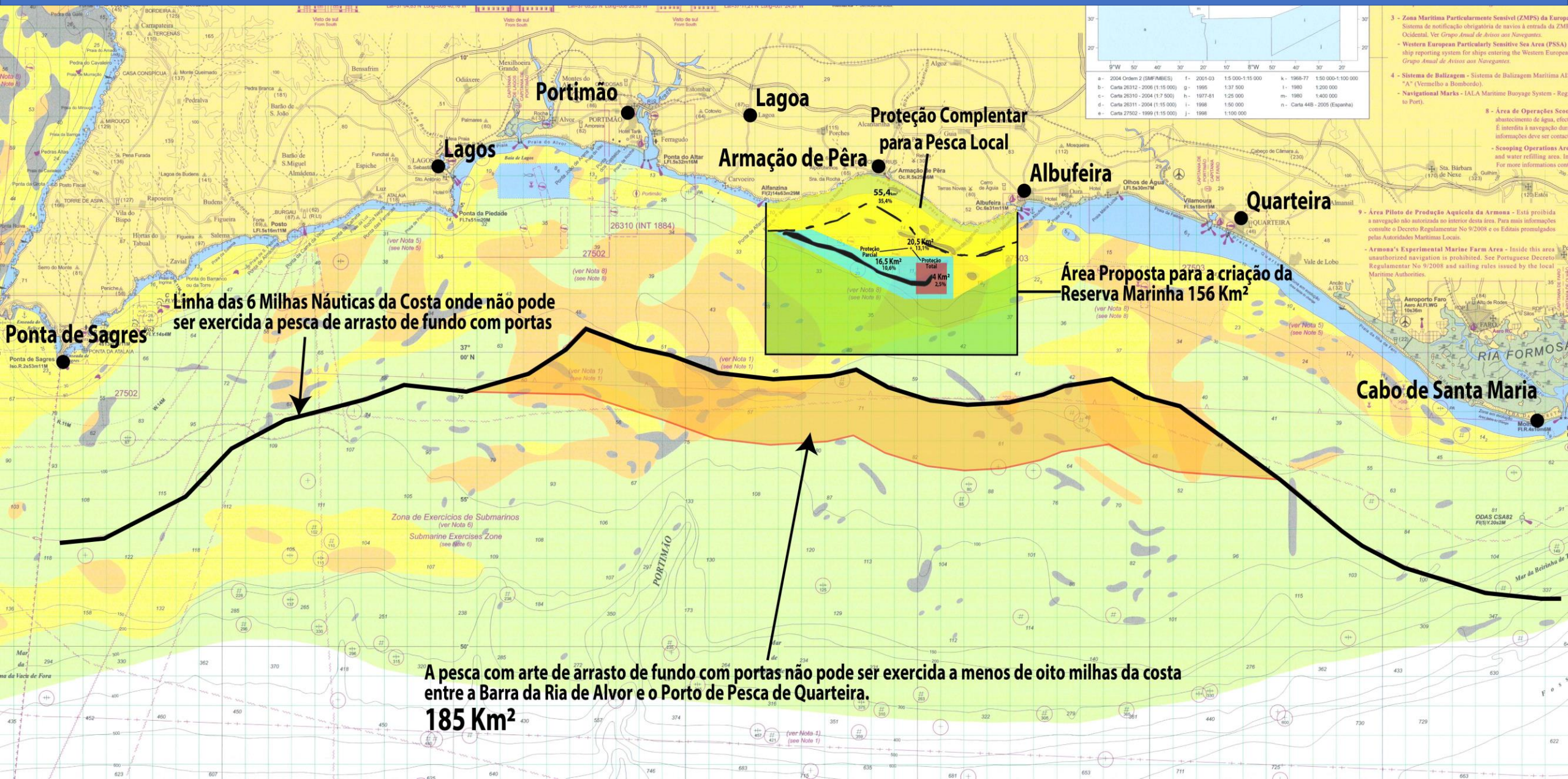
# MARINE SPATIAL PLANNING

Establish the value of each fishing zone  
Quantify production in terms of value and quantity of fish  
per hectare.



Reorganization of the fishing sector in order to maximize  
the production of fishing areas through sustainable fishing  
gear.

# MARINE SPATIAL PLANNING



# ONLINE FISH-MARKET APPS

## UNDESTANDING

**Illegal, Unreported & Unregulated  
(IUU) fishing**

**In the Western Algarve - Portugal**

# ONLINE FISH-MARKET APPS

- Prohibited sale of certain species;
- Fish that is damaged or of an irregular size or weight;
  - Tax evasion.

# ONLINE FISH-MARKET APPS

## MAIN REASON

Immoral discrepancy between the auction price and the price paid by consumers.



In coastal communities we should have direct fish commercialization circuits between fishermen and consumers.

# ONLINE FISH-MARKET APPS

Ferragudo  
Fishing Harbour

Traditional Market





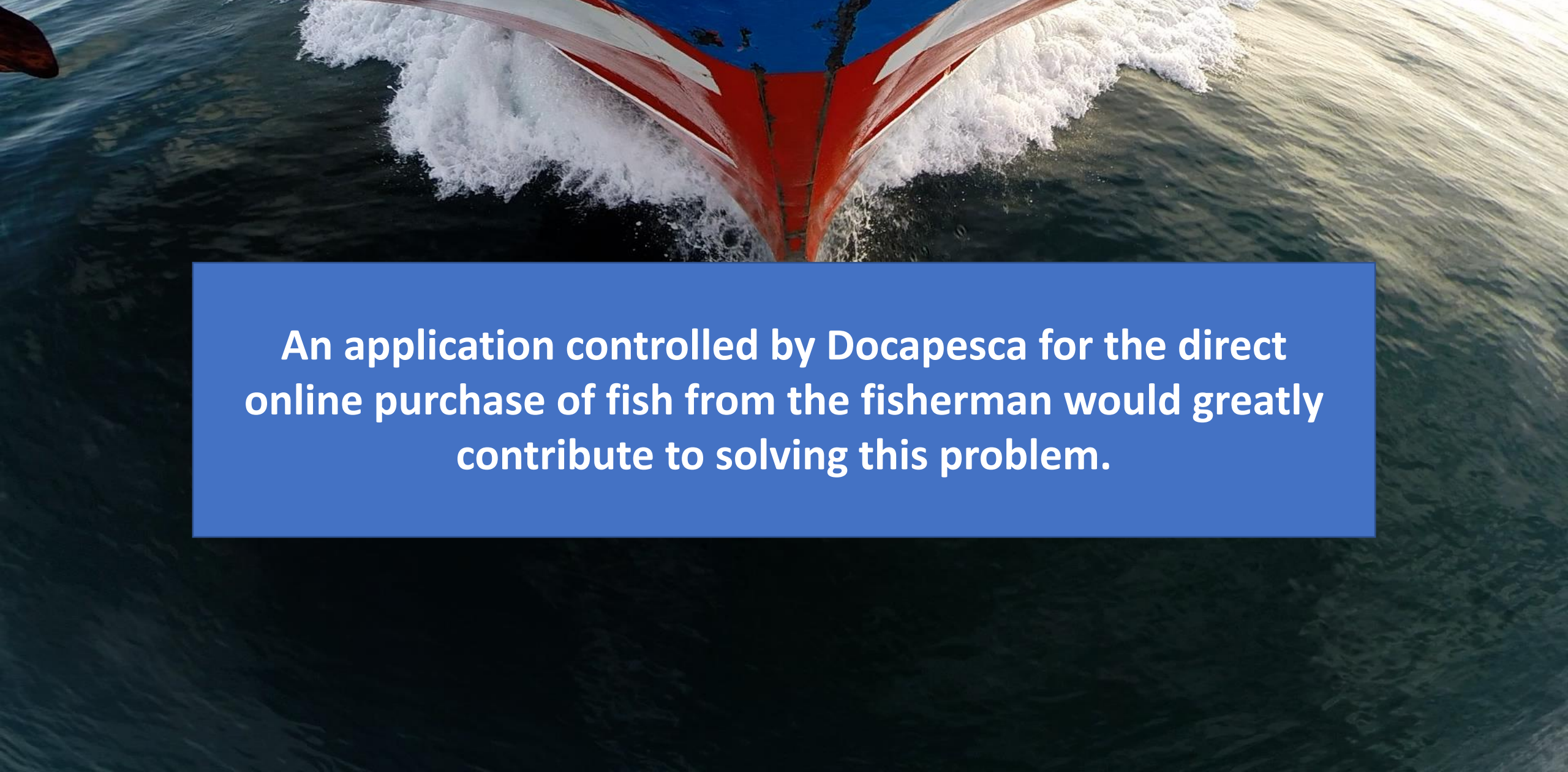
# ONLINE FISH-MARKET APPS



Touristic Beach

Armação de Pêra  
Fishermen Beach

# ONLINE FISH-MARKET APPS



**An application controlled by Docapesca for the direct online purchase of fish from the fisherman would greatly contribute to solving this problem.**

# ONLINE FISH-MARKET APPS



**Thank you**

## **Bibliographic references:**

**Gonçalves, J.M.S., Monteiro, P., Oliveira, F., Costa E., Bentes, L. (2015).** Bancos de pesca do Cerco e da Pequena Pesca Costeira do Barlavento algarvio. Relatório Técnico No. 1/2015 - PescaMap. Universidade do Algarve, CCMAR, Faro, 104 pp + Anexos.